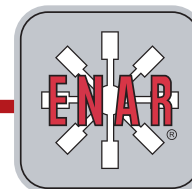
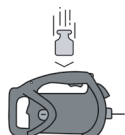


PORTABLE ELECTRIC FOX



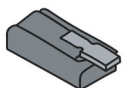
The FOX is a single-phase, portable electric motor from ENAR which is protected by its sturdy, ergonomic housing. It has been designed to transmit power through a transmission which turns, causing an eccentric inside the poker head to spin at 12,000 rpm and generate vibration.

Designed & manufactured in Europe to a high standard of quality. Manufactured using high quality materials ensures high resistance & protection (IP44). The FOX uses an oversized motor and double insulation to guarantee its performance in every job condition.



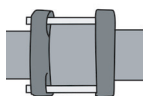
+ Robust & resistant Against damage.

The material used in the housing of the FOX is resistant against impact, and also stable when the product reaches high temperatures from continuous use on heavy workloads.



+ Carbon brushes With quick release system.

The complete range of portable electric ENAR vibrators use quick release carbon brushes. Making them easy to change. No need to take the product apart.



+ Encased motor made for maximum protection.

The FOX is the only concrete vibrator with an independent motor, mounted separately from the housing, using a small bespoke frame, providing additional protection and facilitates easy product maintenance with fewer spare parts.



+ Manageable Thanks to its two handles.

The FOX has one handle on top which incorporates a switch and is used to easily hold the motor while in use. Alternatively, the FOX also has a smaller handle at the back which is more comfortable for those using smaller transmissions.

TECHNICAL DATA

MODEL	WEIGHT (Kg)	VOLTAGE (V)	FREQUENCY (Hz)	POWER (W)	DIMENSIONS (LxWxH)
FOX 230V	5.8	230 1~	50-60	2,300 W	342x150x216
FOX 115V	5.8	115 1~	50-60	1,800 W	342x150x216

- › Highly resistant housing (IP44).
- › Oversized motor & double insulation.

- › Other couplings available.
- › Includes shoulder strap.

AX HEADS

MODEL	DIAMETER (mm)	LENGTH (mm)	WEIGHT (Kg)	SPEED (r.p.m)	PERFORMANCE m³/h
AX 25	25	285	0.8	14,000	10
AX 32	32	366	1.7	13,750	14
AX 40	40	335	2.2	13,500	17
AX 48	48	335	3.2	12,500	28
AX 58	58	344	4.5	12,000	35



- › oversized eccentric.
- › 4 lubricated bearings with double lock.

- › Easily interchanged

FLEXIBLE TRANSMISSIONS

MODEL	LENGTH (m)	WEIGHT (Kg)
TAX/TDX 0,6 - TAXE/TDXE 0,6	0.6	2.6
TAX/TDX 1 - TAXE/TDXE 1	1	3
TAX/TDX 1,5 - TAXE/TDXE 1,5	1.5	3.5
TAX/TDX 2 - TAXE/TDXE 2	2	4
TAX/TDX 3 - TAXE/TDXE 3	3	5
TAX/TDX 4 - TAXE/TDXE 4	4	6
TAX/TDX 5 - TAXE/TDXE 5	5	7
TAX/TDX 6 - TAXE/TDXE 6	6	8



- › Reinforced TAX/TDX transmissions.
- › Vulcanized transmission at the poker end, providing protection to the part of the transmission most likely to wear out or break.

- › TAXE/TDXE only for the AX25 & AX 32 poker heads.